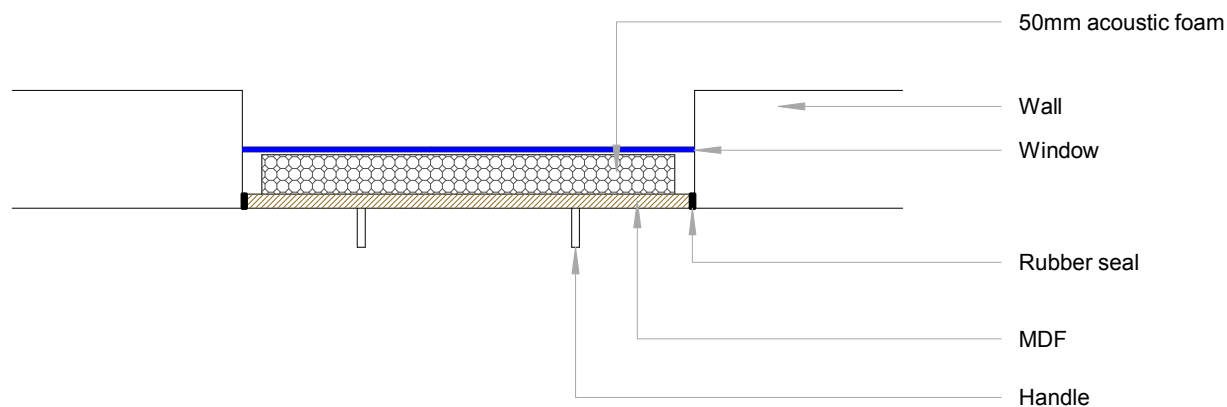
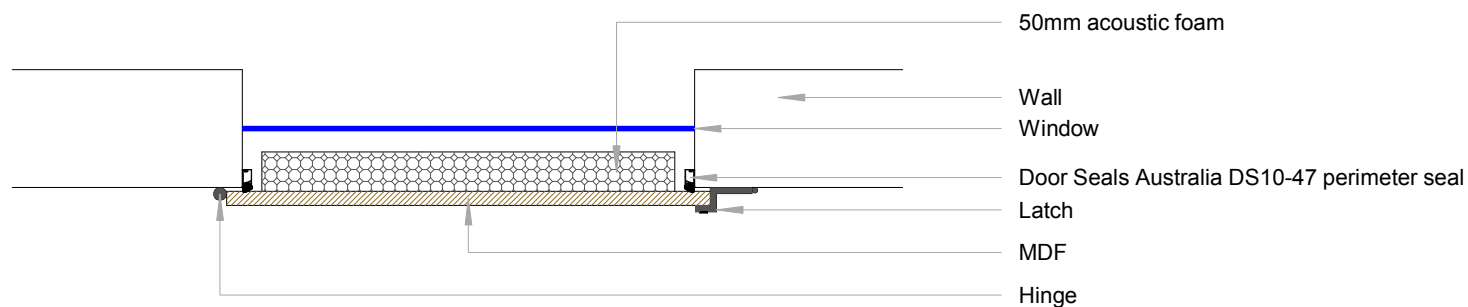


Where recording studio window is not an option, this design works well. It is very important that the seal around all 4 edges of the window be airtight and the cavity be damped with acoustic foam or something similar. This is suitable for windows that need to be opened for light and ventilation but need to be closed at times when it needs to be soundproof.

An alternative to hinges is to use handles and make the plug removable. In this case it must be a snug fit inside the window frame.



ultrafonic
a better listening experience

Soundproofing
Construction Guide
Openable Window Plug
October 2010